



TIM INTEGRATION SERVICES

The efficient and high-performance solution
for data exchange with TIM

PRECAST

SOFTWARE
engineering
A NEMETSCHKE COMPANY

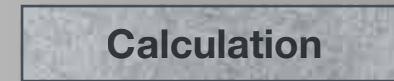
TIM database



Service request



Third-party systems



THINK IN NEW DIMENSIONS

Software & Services for Industrialised Construction

Previously, data needed to be forwarded manually through interaction of the user. With TIM Integration Services the systems communicate independently with one another and can connect and deliver data themselves. The functionality can be used simply and efficiently by third-party systems.

TIM INTEGRATION SERVICES

- Simple procurement and more efficient exchange of data
- The communication runs in the background and does not require any user input or interaction.
- System independent and platform independent – the systems remain autonomous.

TIM INTEGRATION SERVICES

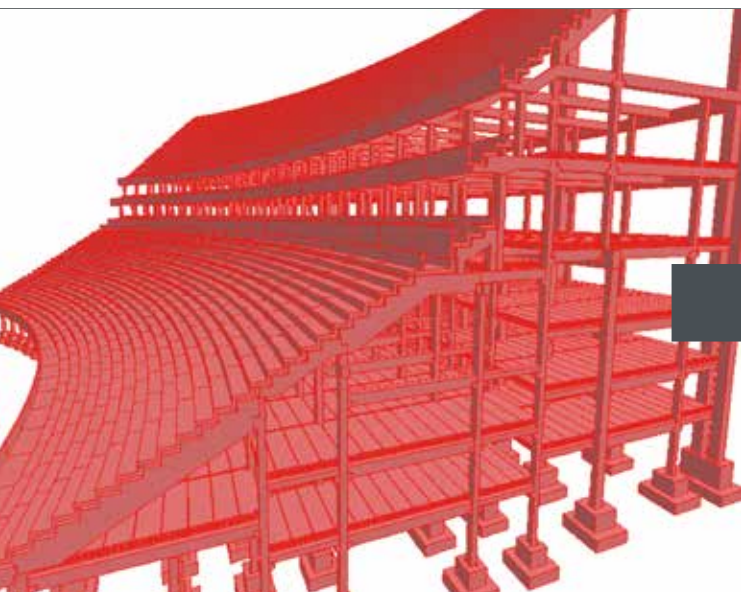
The efficient and high-performance solution
for data exchange with TIM



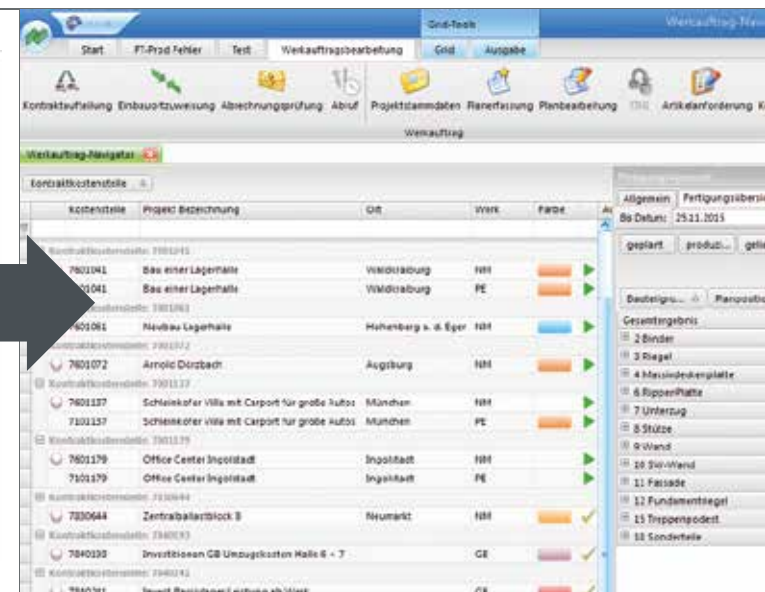
TIM database

Service request

Third-party system



```
</xs:element>
  <xs:complexType name="ArrayOfNmWsPrecastLayer">
    <xs:sequence>
      <xs:element xmlns:q44="at.Nemetschek.TIM.WebServices01" minOccurs="1" maxOccurs="1" base="NmWsPrecastLayer" type="q44:ePrecastLayerType"/>
    </xs:sequence>
  </xs:complexType>
  <xs:element xmlns:q45="at.Nemetschek.TIM.WebServices01" name="ArrayOfNmWsPrecastLayer" type="q45:ArrayOfNmWsPrecastLayer"/>
  <xs:complexType name="NmWsPrecastLayer">
    <xs:complexContent mixed="false">
      <xs:extension xmlns:q46="at.Nemetschek.TIM.WebServices01" base="q46:PrecastLayerType" type="q46:ePrecastLayerType"/>
    </xs:complexContent>
  </xs:complexType>
  <xs:sequence>
    <xs:element minOccurs="0" name="LayerNr" type="xs:int"/>
    <xs:element minOccurs="0" name="Length" type="xs:double"/>
    <xs:element minOccurs="0" name="Material" nillable="true" type="xs:string"/>
    <xs:element minOccurs="0" name="MaterialID" type="ser:guid"/>
    <xs:element minOccurs="0" name="MaterialTypeID" type="ser:guid"/>
    <xs:element minOccurs="0" name="PrecastElementID" type="ser:guid"/>
    <xs:element minOccurs="0" name="ThicknessOfLayer" type="xs:double"/>
    <xs:element minOccurs="0" name="Volume" type="xs:double"/>
    <xs:element minOccurs="0" name="Weight" type="xs:double"/>
    <xs:element minOccurs="0" name="Width" type="xs:double"/>
    <xs:element xmlns:q47="http://schemas.datacontract.org/2004/07/ser:guid" type="q47:ePrecastLayerType"/>
  </xs:sequence>
</xs:element>
```



© Klebl GmbH

Functionality and processing

- **TIM Integration Services:** a service programme that waits to execute tasks for other systems.
- On the basis of Microsoft WCF (Windows Communication Foundation).
- Only TIM Integration Services require a direct access to the database, but the third-party system does not.

- For communication it is sufficient to define and know several basic specifications (e.g.: protocol, basic address, port).
- The exchange of data and information is possible between internal departments, as well as with external partners.

Advantages

- No knowledge is required about the internal data structures of the other system.
- Access control through user administration.
- The implementation in third-party systems is independent from the platform used.
- Bidirectional exchange of data and information.
- Simple and quick through automated processes.