

# New Features in TIM 2016-1



This documentation has been produced with the utmost care.

Nemetschek Engineering GmbH and the program authors have no liability to the purchaser or any other entity, with respect to any liability, loss, or damage caused, directly or indirectly by this software, including but not limited to, any interruptions of service, loss of business, anticipatory profits, or consequential damages resulting from the use or operation of this software. In the event of discrepancies between the descriptions and the program, the menu and program lines displayed by the program take precedence.

Information in this documentation is subject to change without notice. Companies, names and data used in examples are fictitious unless otherwise noted. No part of this documentation may be reproduced or transmitted in any form or by means, electronic or mechanical, for any purpose, without the express written permission of Nemetschek Engineering GmbH.

Allplan® is a registered trademark of Nemetschek AG, Munich. Adobe® and Acrobat PDF Library™ are trademarks or registered trademarks of Adobe Systems Incorporated. BAMTEC® is a registered trademark of Häussler, Kempten, Germany. Microsoft®, Windows®, Windows Vista™ and Windows® 7 are either trademarks or registered trademarks of Microsoft Corporation.

Parts of this product were developed using LEADTOOLS, (c) LEAD Technologies, Inc. All rights reserved.

Parts of this product were developed using the Xerces library of 'The Apache Software Foundation'.

fyiReporting Software LLC developed parts of this product using the fyiReporting library, which is released for use with the Apache Software license, version 2.

All other (registered) trademarks are the property of their respective owners.

© PRECAST Software Engineering GmbH, Salzburg, 2015. All rights reserved.

1st edition, October 2015



# Contents

<b>Welcome .....</b>	<b>3</b>
<b>Advanced WEB Services .....</b>	<b>4</b>
New features .....	4
<b>Locking of Drawing Files .....</b>	<b>5</b>
<b>User Management .....</b>	<b>6</b>
<b>TIM Admin on Client .....</b>	<b>7</b>
New installation on the client .....	7
Update installation on the server .....	10
Update installation on the client .....	10
<b>Registering Services .....</b>	<b>12</b>
<b>mTIM .....</b>	<b>13</b>



# Welcome

Dear Sir or Madam,

Welcome to the future! TIM - the visual information tool for the precast concrete industry - provides you with everything you need to get the job done - be it virtual planning of production, delivery or assembly. TIM 2016 will make your work even more efficient and effective.

The main new features in TIM 2016-1 include advanced WEB services, locking of drawing files and mTIM.

We wish you every success!

PRECAST Software Engineering GmbH  
Salzburg, October 2015

# Advanced WEB Services

WEB services for communicating with other systems have been integrated in TIM for a long time. This version introduces a wide range of new features for these WEB services.

## New features

**Elements on pallets:** the program tells you which elements are on which pallets.

**Pallet data:** the program provides you with pallet data for a list of elements.

**Layer data:** the program provides you with layer data for the elements, enabling you to get detailed data for each layer.

**Expanded list of reinforcement:** we integrated many more reinforcement details in this list.

**Expanded list of fixtures:** we added many more features to this list.

**Master data:** you can get information on master data, such as element types, material types or catalogs, such as concrete grades and steel grades. In addition, you can retrieve lists of fixtures or lists of production units.

**BVBS:** you can now use the WEB services to get BVBS strings for reinforcement meshes.



# Locking of Drawing Files

An important new feature in this version is the change in the locking system.

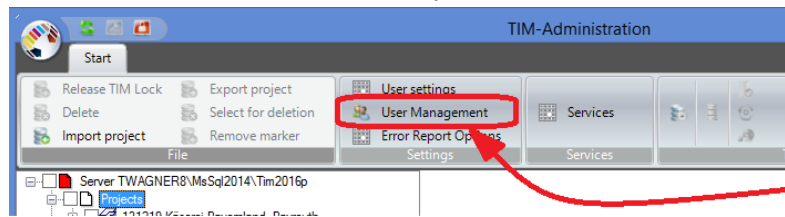
The locking system in TIM protects data from unauthorized editing and prevents data loss due to concurrent access. For example, TIM locks data records while you are stacking elements. By doing so, TIM ensures that no one else imports changes for these elements at the same time.

However, earlier TIM versions locked each single project, drawing file, placing polygon, element and so on. Consequently, the program had to access the database permanently, which considerably slowed down the performance .

The new solution in TIM 2016 locks only drawing files, thus reducing database access to a minimum. As a result, TIM is much faster and does not have any problems when it comes to locking data.

# User Management

We revised user management so that you can now make adjustments or additions without having to activate the tools in TIM Administration, allowing other users to continue to work at other computers.



# TIM Admin on Client

We revised TIM Administration so that you no longer have to install TIM on the database server.

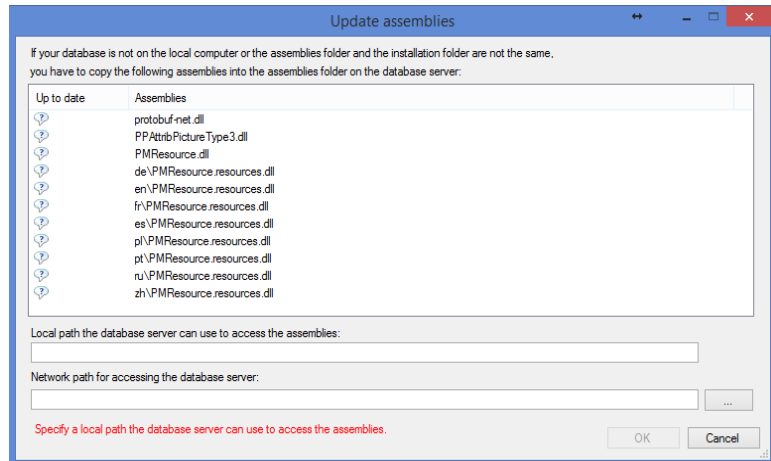
Earlier versions required you to install TIM on the database server, as TIM takes certain assemblies straight from the database. Therefore, these assemblies must be available on the server.

TIM 2016 is the first version you no longer have to install on the database server, as TIM Administration allows you to copy the required assemblies from the client PC to the database server. If this is not desired for security reasons, the system administrator can copy the assemblies manually and users can then access TIM Administration straight from the client.

## New installation on the client

When you use the client PC to install TIM for the first time, enter the data of the new database in TIM Administration as usual.

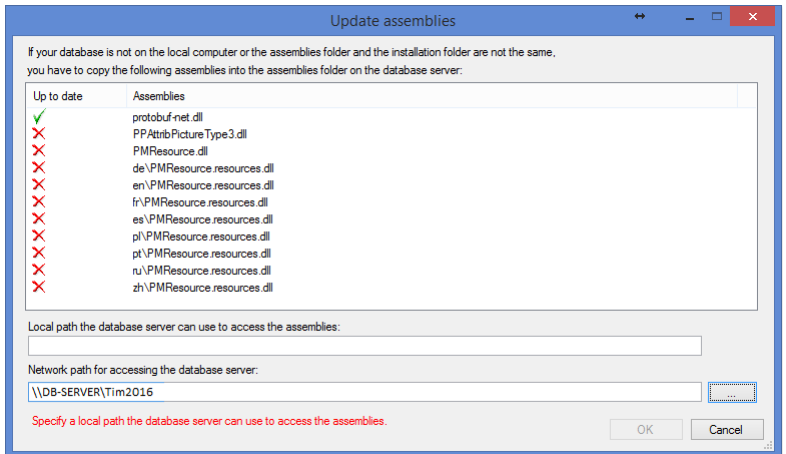
TIM Administration then recognizes that the database is on a different computer and opens a dialog box for copying the assemblies required on the server.



This dialog box lists the files to be copied. A question mark in front of the file name indicates that you have not yet specified the file path for checking the assemblies on the server.

So that the program can check and copy the assemblies, you have to enter or select a network path to a shared folder on the the server. To do this, use the data entry box at the bottom of the dialog box. For example, enter `\\DB-SERVER\Tim2016` for the network path.

In any case, the path must lead to a folder on the database server. Make sure the database can access this folder.

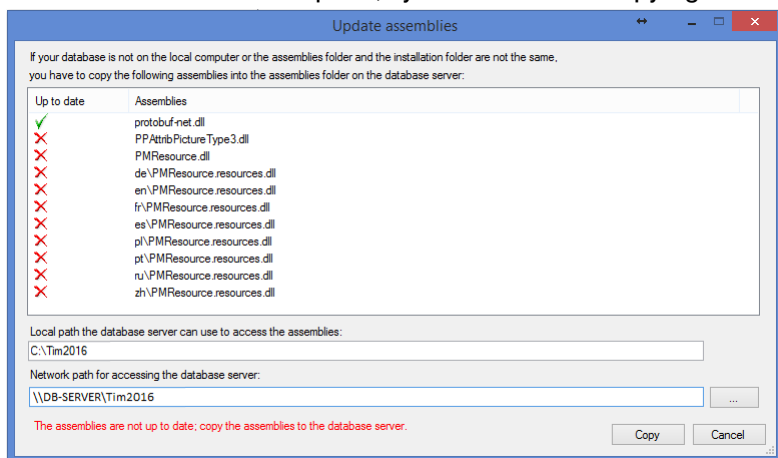


As soon as the client can access this folder, TIM Administration checks whether this folder contains the required assemblies. Therefore, be sure to use different folders for different TIM installations (different versions). As you can see in the illustration above, you do not need to replace one of these files, as the correct version of this file is already available on the server. But you still have to copy all the other files.

So that the database server can find these files, you also have to specify a local path, which the server can use to access the assemblies. This path is normally not accessible by the client. For example, the path could be "C:\Tim2016". This path should not be a network path, as otherwise the database requires corresponding privileges to access network paths.

In any case, the two paths - the local path and the network path - must lead to the same folder on the server.

If the entries are complete, you can start copying.



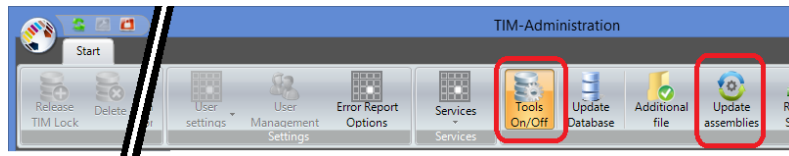
After this, you can set up the database as usual.

## Update installation on the server

When you update TIM on the database server, you do not need to do anything else, as the server already has access to the assemblies and the update installation automatically updates these files.

## Update installation on the client

If there is a server installation you no longer need, you can uninstall TIM from the server and then install TIM on the client as described above.

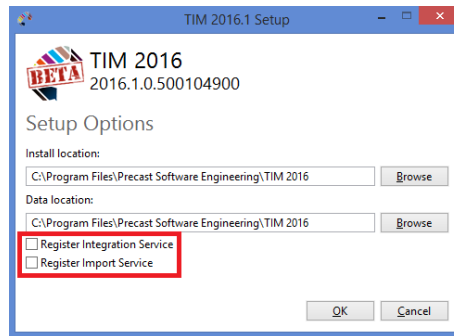


Using the "Update assemblies" tool, you can find out whether the assemblies on the database server are consistent with the TIM version installed or whether you have to update the assemblies. When you use this

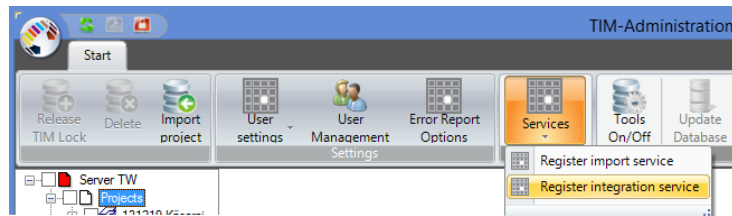
tool for the first time, you have to enter the two paths mentioned above.

# Registering Services

You can now register the "Import Service" and "Integration Service" in TIM Administration at any time even if you forgot to install these two services together with TIM.



You can register a missing service in TIM Administration later.



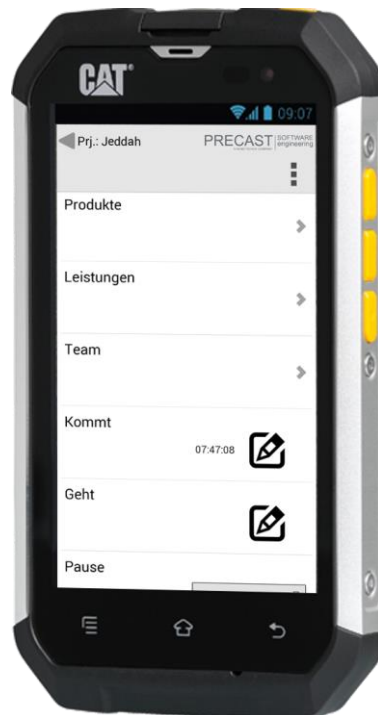
Services you have already registered are grayed out and cannot be selected again.



# mTIM

With TIM 2016, you can use your smartphone to access selected TIM data from anywhere.

This solution was specially developed to provide on-site assembly teams with data (time registration, messages and any other information) and to electronically record their feedback.



Depending on what is planned for the day, every assembly team gets exactly the data the team members need to do their jobs. If there are changes in planning, you can adjust the data at any time. Depending on the configuration, you can record all kinds of information on the go. The program stores these data in the database. You can then create assembly reports based on these data.

As a result, TIM provides you with up-to-date information on the current assembly status whenever you want.