

SALESMANAGER

The tool for sales

PRECAST | SOFTWARE
engineering
A NEMETSCHKE COMPANY



THINK IN NEW DIMENSIONS

Software and Services for Industrialised Construction

The SalesManager offers you the opportunity to quickly and securely complete convincing offers. This sophisticated model calculates volumes and quantities automatically from the building model, generates lists and graphic reports and transfers data to a commercial calculation programme.

Furthermore, the SalesManager offers a complete and appealing visualisation, which can then be sent to the customer as a 3D PDF for example. The operation is so intuitive, that sales staff without prior CAD skills can immediately create 3D models.

SALESMANAGER

- Create your 3D model fast and easily
- Determine volumes and quantities quickly
- Visualise the offered positions

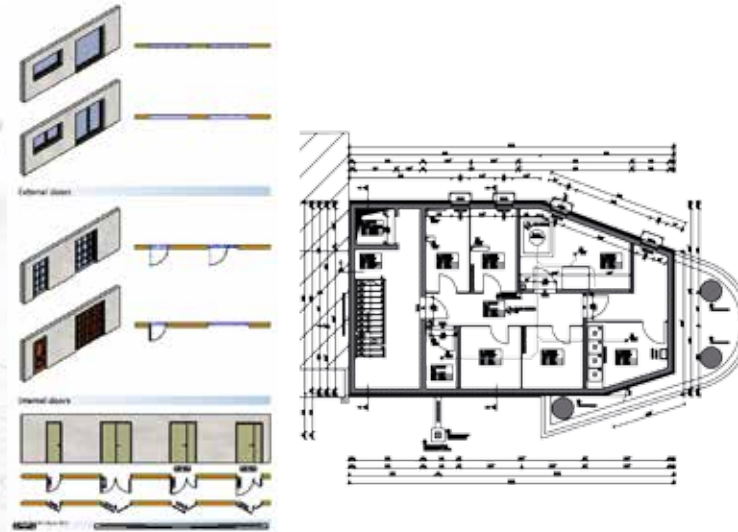
„With the help of SalesManager, I can transparently determine the necessary volumes across all workstations and implement any modifications quickly and easily. In this regard, the 3D model of the precast parts is a decisive help in the sales process.”

Dirk Spielbrink, Head of Sales, Lütkenhaus GmbH (Germany)

The traditional way with calculator and triangle ruler



Assistant



Visualisation



© Lütkenhaus GmbH

Functionality

- You can easily import existing plans (PDF/DXF/DWG) and drag & drop them onto the PLANBAR drawing area.
- Use 3D graphical assistants to quickly and easily create 3D objects.
- From these 3D models, the SalesManager automatically determines volumes and quantities as well as traceable lists and graphical reports.

Implementation

- We work with you to develop your company-specific requirements.
- We then prepare your personal user interface and create the required assistants and reports.
- Implementation services include the training of your employees, the go-live and the ongoing adaptation to your needs.

Advantages

- Rapid calculation of volumes and quantities
- Comprehensive listing of the offered positions
- Intuitive operation
- No CAD skills required